



# Pennsylvania Thoroughbred Horsemen's Association, Inc. Newsletter

**SPRING EDITION**

**2001**

## PTHA ENJOYS RECORD-SETTING YEAR

If you needed words to describe what 2000 was like for the horsemen and horsewomen at Philadelphia Park, a Frank Sinatra song might have accomplished it best.

It was a very good year

PTHA Executive Director Mike Ballezzi pointed that out emphatically at the annual general membership meeting at Philadelphia Park last month. His words were supported by a letter to the members from President Larry Riviello, who stressed that the cold facts supported the idea that last year was the most successful in the history of the PTHA.

Consider record purses of more than \$31 million, an increase of 16.21 percent over 1999, record savings by horsemen in the purchase of feed, shavings and supplies from the Horsemen's Purchasing Association, which, of

course, posted record sales in excess of \$1.6 million.

Also consider record medical, dental, prescription and chaplaincy benevolence in excess of \$400,000 from the PTHA Benefit Trust and record rehabilitation, refurbishment and maintenance of the backside of more than \$600,000.

Come to think of it, Frank Sinatra would have been hard pressed to produce as many records in a single year.

\* \* \*

After detailing all of that progress, including completion of the \$4 million renovation to the second floor of the racetrack, Ballezzi said the best was yet to come, including the opening of the sixth and final Off Track Betting facility in the Northeast section of the city, projected for July of this year.



**PRESIDENT LARRY RIVIELLO** at the podium.

The Executive Director talked about the legislative initiative won by the horsemen last year that returned \$10 million from Pennsylvania's general fund to the state's four racetracks, from which \$4.3 million was Philadelphia Park's share. Half of that last figure was

*continued on pg. 10*

## CLAIMING CROWN PREVIEW DAY: SUCCESS BREEDS IMITATORS

Expectations are even higher this year than they were last June 10 when the inaugural running of the Pennsylvania Claiming Crown Preview Day proved to be such a smashing success and led to an even greater triumph later in the summer.

The Preview was intended to mirror the Claiming Crown, a national event that will be staged this August for the third straight year at Canterbury Park in Minnesota. Seven races were held in 2000 for both the Preview and the Claiming Crown under the same conditions and over the same distances and surfaces.

Total purses for the Preview races last year at Philadelphia Park were almost a quarter of a million dollars. This year, only six races will be run but total purses will remain the same.

In addition to the Preview races, the Bensalem Stake and three overnight races are carded for the event on June 2 this year. Adding the purses for the 10 races

*continued on pg. 6*

PENNSYLVANIA CLAIMING CROWN PREVIEW DAY II Saturday, June 2nd 2001		
PURSE	CONDITIONS	DISTANCE
\$25,000	For 3 & Up which have started for a claiming price of \$5,000 or less since ONCE July 31, 2000	1 1/16 MILES
\$25,000	For 3 & up which have started a claiming price of \$7,500 or less ONCE since July 31, 2000	6 FURLONGS
\$30,000	For Fillies and Mares, 3 & Up which have started for a claiming price \$12,500 or less ONCE since July 31, 2000	6 1/2 FURLONGS
\$40,000	For 3 & Up which have started for a claiming price of \$16,000 or less ONCE since July 31, 2000	6 1/2 FURLONGS
\$50,000	For 3 & Up which have started for a claiming price of \$20,000 or less ONCE since July 31, 2000	1 1/16 MILES (Turf)
\$50,000	For 3 & Up which have started for a claiming price of \$25,000 or less ONCE since July 31, 2000	1 1/8 MILES
Free Nominations Close May 8th, 2001		
PHILADELPHIA PARK RACETRACK		

**PREVIEW DAY** facts and figures.

# President's Message . . .

Old Man Winter didn't want to give up after a cold, snowy couple of months. Yes, there was one inch of snow on March 26. Fortunately, we only lost six days of racing.

The Penn National HBPA and our PTHA board of directors met Monday, Feb. 26, at the Eden Resort Inn and Conference Center in Lancaster, PA. Some of the agenda items were renewal of legislative initiatives, slots, claiming rule changes, paying down and trainer pensions.

Thanks to Penn National HBPA President John Wames and board members for attending and having a productive meeting. Another meeting will be scheduled in the near future.

The Pennsylvania State Horse Racing Commission unanimously voted to approve the taxable wagering policy for 2001 at Philadelphia Park.

WAGER	ASSOCIATION %	STATE %
Tote (win, place, show).	15.5	1.5
Daily Doubles	17.5	2.5
Exactas	17.5	2.5
Trifectas	27.5	2.5
Superfectas	27.5	2.5
Pick 3	23.5	2.5

Tiznow, the 2000 Horse of the Year was bothered by a quarter crack in his right front foot. The quarter crack was patched and supported with wiring and screws holding the quarter crack together. Yes, Tiznow won the Santa Anita Handicap, purse \$1 million, scoring by five lengths. Class! Class! Class!

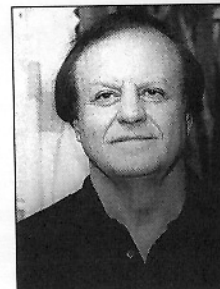
Congratulations to apprentice jockey Danny Velazquez, son of trainer Alfredo Velazquez, on breaking his maiden at Philadelphia Park.

Congratulations to trainer Lucy Childress. Lucy was interviewed on Let's Go Racing March 10 after obtaining her trainer's license March 3 and on the very same day, saddling a 3-year-old maiden filly named Simply You, who promptly gave the brand new trainer her first win. Simply You is owned by Hole In One Stable's "Doc" Malloy.

Congratulations to the connections, past and present, of Al The Fighter, a 4 year old who won five in a row.

The new Northeast Turf Club off track wagering facility is almost completed, with the opening scheduled for July.

I've been in racing for over 40 years and I've never witnessed anything like what happened at Santa Anita on March 17. The daily double in the 7th and 8th races, 8-8, returned \$94. One of the winning horses, Heisman, returned more to win, \$98.20, than the double paid. The exacta with Heisman on top returned \$407.80, the trifecta, \$664.20 and the superfecta, \$51,342.



**LARRY RIVELLO**  
President

Update on owner/trainer Lloyd Romero's 4-year-old filly, Hallowed Dream, who won 16 straight races Louisiana to equal Cigar's all-time record. The filly now has 20 wins in 21 starts and broke a track record for furlongs in 1:08 1/5.

Steve Appel, Chairman for the Claiming Crop Preview series, called a meeting to fine tune the eligibility. In attendance were Steve Rowan, Mike Ballezzi, Sinatra and yours truly.

The Preview will be contested June 2 so get your entries ready now.

They were off at the Nad El Sheba Race Course Saudi Arabia for the Dubai World Cup, purse \$8 million distance 1 1/4 miles.

Captain Steve came off the pace to win by overlength. The winning combination of Bob Baffert, Jim Bailey and Captain Steve brought honor and prestige to the U.S. in capturing the rich, international race. Bailey has captured two of three in the Dubai race.

The annual General Membership meeting was held March 28 at Philadelphia Park and thanks go to the membership for a very good turnout.

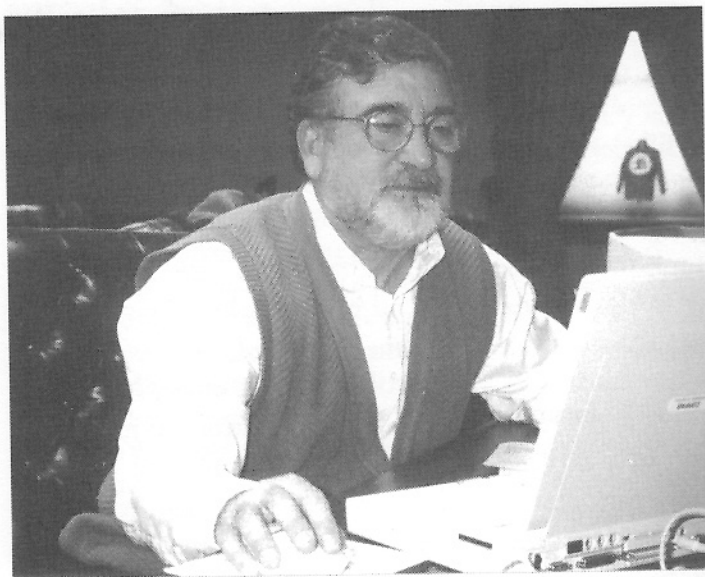
Kelly Young, Manager of Lost & Found Rescue, a nonprofit organization that specializes in saving and rehabilitating horses that either have been neglected or in case of race horses, are no longer able to perform, guest speaker. She pointed out to our horsemen and horsewomen that they can donate their horses whose racing careers have ended to her organization and deduct them on their income tax returns at the last year for which the animal raced. We thank her for her excellent presentation.

We also give our thanks to Laurie McDowell, board member of the Penn National HBPA, for attending and participating in the meeting.

**Thought for the day**  
*He who has good health is young.*

# KEEPER OF THE LEDGERS

—by Larry McMullen



**MIKE COLUCCI, CPA**

*(Another in a series of articles about people who earn a living at Philadelphia Park and the kinds of work they do).*

How do you account for the wide variety of jobs performed at a racetrack?

Simply make a ledger of just about all the needs of humankind and then list the kinds of work that would be necessary to meet those needs. Obviously, the jobs aren't always about working directly with race horses.

Accounting would be one example.

Keeping a ledger would be another.

Meet Mike Colucci, CPA, of Colucci & Slattery, P.C. In other words, he's an accountant, a keeper of ledgers who helps clients deal with such intricate matters as banking, investing and estate planning as well as income tax.

It just so happens that a sizable part of his business these days is involved with horse racing.

Until around 30 years ago, when he was working on an audit of the Cherry Hill Inn and the Cherry Hill

Lodge, his closest association with horses had come as a kid, sitting on an Abbott's milk-wagon drawn though the streets of South Philadelphia by a heavy-legged old Nelly.

"I was 12 or 13," he remembers. "The milk man used me to run door to door to collect from our customers."

The audit he performed in New Jersey in the early '70s had far more complicated numbers. The Cherry Hill businesses were owned by Eugene Mori, who also owned Garden State Park. The racetrack's controller at the time worked closely with Colucci on the audit and that connection helped the accountant gain horsemen and horsewomen as clients, including owners, trainers and breeders.

"It's such a niche market," said Colucci. "It became increasingly important that I gain expertise on horsemen's concerns, including finances and tax problems."

He picked up an account with the HBPA at Philadelphia Park in the 1980s, an association that continues to this day with the current PTHA. He was also accountant for the New Jersey THA for a number of years as well as maintaining individual clients in the racing business.

The most dramatic moment in his career around racetracks happened in April of 1977, the height of tax season, when he was driving across the Tacony-Palmyra Bridge with a brief-

case on the seat beside him loaded with tax returns of horsemen at Garden State Park. About midway over the bridge, he saw smoke rising from the area of the track. What he was witnessing, of course, was the death by fire of the old grandstand structure that had been built with what amounted to spare parts during World War II.

Colucci grew up in the famed St. Monica's parish in South Philly that produced a number of legendary athletes and entertainers, including basketball Hall of Famer Paul Arizin and pop singer Kitty Kallen.

Mike played basketball on the playgrounds at a time when old men bet on the games and kids threw firecrackers at the players to hamper their performance. But almost nothing back then could discourage neighborhood kids from dreaming big dreams.

Colucci's only dream was to become an accountant, like his mother was. He followed that road through LaSalle High School and LaSalle College, from which he graduated in 1965.

Mike Colucci is one of those people who achieved even more than he dreamed, including an encyclopedic knowledge as an adult of some of the great concerns of a sport that somehow had almost escaped his attention during his younger years even though he grew up in a place where race horses were studied with deep passion on street corners.

He tries to give back for his success in life in his community, Horsham, where he is a former president of the Chamber of Commerce and current president of the Friends of the Horsham Library. He and his wife Sandy Baker, a practicing dentist, have four children and four grandchildren.



# WHERE THERE'S A WILL, THERE MIGHT BE A WAY

by Larry McMullen

Charles Vance Millar was a wealthy Canadian lawyer who was still a bachelor without children when he died on Oct. 31, 1926. The main loves of his life were the law, horse racing and practical jokes.

Not even death could stop his pranks and in that regard, he left behind a history lesson that has value even for modern horsemen and horsewomen.

. . .

To give some indication of just how much money Millar had when he passed away, he left \$500,000 in his will to sponsor a Baby Derby. The practical jokes in all of the clauses of his will were to show just how far people would go to get their hands on his money.

The point of the Baby Derby was to see how many babies Toronto women could have in the ten years following his death. Since most of

the contest was waged during the Great Depression, maternity wards in the area became filled to overflowing. Newspapers all over Canada and the United States carried running totals on how the contest was going. Newsweek followed the story for at least the last two years.

At the end of the derby, four women, each of whom gave birth to nine babies in the ten years, shared the prize, which would have been worth more than \$1 million apiece in today's money.

. . .

Millar also bequeathed shares in two jockey clubs that owned race-tracks and in a brewing company.

One share in the brewing company was left to each Protestant minister in Toronto.



One share of stock in the Kenilworth Jockey Club was left to

each Christian cleric in Sandwich, Walkerville and Windsor, Ontario. Ninety-one clergymen accepted the shares and cashed them in for \$56.80, a lot more than it seems when the times are considered. Several ministers lost their jobs as a result.

In his boldest move, Millar targeted a former attorney general of Ontario and a brimstone and fire preacher, both of whom were radical foes of gambling, to receive his most lucrative shares in the Ontario Jockey Club.

Both accepted the shares, thus becoming members of the Jockey Club, and prospered greatly from being involved in horse racing.

If you had to put into words the lesson history teaches in this case, it might be that people who seem to be your strongest opponents can sometimes wind up as very good friends.

	<h2>PTHA</h2> <h2>TROPHY WINNERS</h2> <p>February - March</p>	
HORSE	OWNER	TRAINER
AL THE FIGHTER KYLE'S EARS CHARLIE MAN PANTHER POND VERDICK LIL JOE'S LUCKYCENT FANTASTIC BEAUTY KNOCKOUT THE TRUTH RAMBO MOUNTAIN BUCK AND FROLIC PAL'S O K KIT KAT KID	ERNEST CRANFIELD PETRIFIED STABLES TWO C STABLES AND EMANUEL GREENBAUM ANCIENT OAK FARMS CORP. STEVEN KREBS FRANK REGALBUTO & JOHN QUAGLIATA JOHN SESSA DANA MOSCO ELIZABETH BECHT STEVEN FRIEDFERTIG NICK CARONE WIND N' LEAVES FARM, INC.	ERNEST CRANFIELD PAM SHAVELSON ANTHONY CORRENTI TODD BEATTIE STEVEN KREBS RODRIGO MADRIGAL, SR. GUADALUPE PRECIADO STEVEN KREBS ELIZABETH BECHT ALLEN IWINSKI ALLEN IWINSKI TIMOTHY SMYLYE



## Chaplain's Corner...

Shortly after arriving as Chaplain at Philadelphia Park, I discovered something fascinating. Far more than people and horses inhabit the backside! At first, I noticed the cats. All sizes and colors of felines make the backstretch their home. For example, Geronimo hung around the Rec Hall until he disappeared a few days ago. Word around the Rec Hall was that said cat was last seen in the area of a dorm where he was being well fed — Dorm 3, the women's dorm!

Then the goats caught my eye. Mary, whom I met at Pony Barn A, was my first goat friend. Someone said goats help to calm horses. Of course, there are the ever-present pigeons. One morning I looked up at one of the vents on Barn 28, spinning like a top in the brisk wind. Perched atop the vent was a pigeon surely suffering from a grand case of vertigo. Chickens, rabbits and geese add to the cast of animal characters and the fascinating texture of the backstretch. Just when I figured I had seen all the varieties of creatures living on the backside, someone asked if I had met the potbelly pig in Barn 25. Well, it was my pleasure to meet "Miss Piggy" the next morning.

So, what's the point here? It's that God is most kind to give us the variety of supporting cast at the barns, gracious in sharing with us His infinite imagination and lavish in providing for His creatures. I'm struck by the way the people care for all the animals. When Geronimo, the cat, was frequenting the Rec Hall, he never seemed to go hungry. Just as I was wondering who was feeding him, early one morning I saw "Duck," who works at Barn 30, leaving the front porch of the Rec Hall, having just left food for our friend. Yes, God has concern for his creation. Jesus said, "Not one (sparrow) is forgotten by God." He cares. If he shows compassion for his furry, feathery creatures, he surely cherishes His human creatures, who are "made in the image of God," as the Bible reminds us.

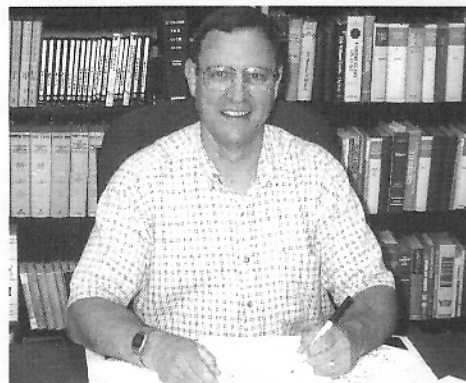
It takes all kinds at the track, including the supporting cast of those critters all around you every day. Think about it.

God provides all sorts of people and animals to become part of our lives, many who enrich us and show us that we're constantly on God's mind. All are there reminding us of God's great creative love and grace. Pet a rabbit, goat, cat or horse today and give thanks to God for his goodness. Let your love for the animals point you to the love of the one who provided them, the Lord of all creation.

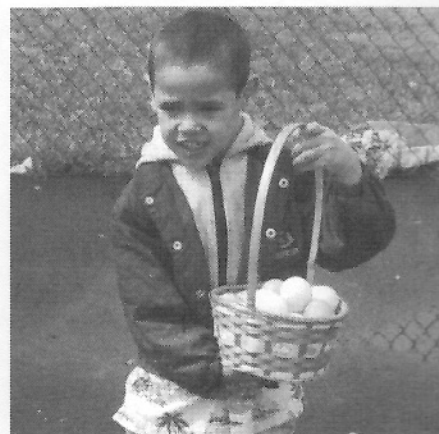
\* \* \*

Thanks to the PTHA and members of the First Baptist Church of Levittown, everyone who attended the annual Easter Egg Hunt had a wonderful day on Saturday, March 31. "Daisy Mae," the clown, arrived right on time to make animal balloons for each child and to clown around for the morning. Each child, ages 2 to 10, received a free Easter basket. They then had great fun filling them with eggs they found in the back of the Rec Hall. To add to the fun, those attending guessed at how many jelly beans were in the large jar. The winner got the jelly beans, PLUS a very big stuffed Easter Bunny.

The party included a video that presented the true meaning of Easter, and in each child's gift bag was a booklet presenting the Bible's account of Easter. Also in each bag were some other gifts for the children — a Beanie "Treasure" given by the Small Mall of Bloomsburg, PA, and a top with the words, "God Loves You" printed on it. The people from Levittown boiled and decorated forty, count them, forty dozen eggs. Hidden with the Easter eggs were sever-



**CHAPLAIN  
JACK CORDELL**



al plastic eggs filled with candy.

For crafts, the children each made a frame of jumbo popsicle sticks, brightly painted and prepared by Pat Hodge and Colleen Doyne. After having their picture taken with "Daisy Mae," the children then placed their polaroid photo inside the frame.

For lunch, everyone enjoyed hot dogs, soda, chips and cake. Our hearty "Thank you!" goes to the PTHA for funding the event and the First Baptist Church of Levittown for preparing the eggs and helping to present the party.

...

Many people do some very special things for those who work on the backside. It's always a delight to thank those who give of themselves to enable the racetrackers to enjoy better lives. For example, Lina Castro, Health Educator for the Latino Health Project, presented a seminar "Let's Say NO to Tobacco" on Thursday, February 22 in the TV room in the Rec Hall.

*continued on pg. 8*

## CLAIMING CROWN PREVIEW DAY

*continued from page 1*

plus nominating fees and bonuses, total money for the day will be \$333,500.

What turned out last year to be every bit as important as the money was the thorough preparation the Preview Day provided for Philadelphia Park horsemen, whose invasion of Canterbury Park two months later yielded three victories, two seconds, a third and a fifth out of just seven horses entered in the Claiming Crown's seven races. The Roman legions didn't do much better in overrunning the entire civilized world.

PTHA Board Member Steve Appel chairs the Claiming Crown Preview Day, which has served as a model for other racetracks in the country looking to ride local performances on the road to glory in Minnesota.

### CLAIMING CROWN PREVIEW DAY II SATURDAY, JUNE 2ND, 2001

**Iron Horse Stakes**, Purse \$25,000. For 3 and up which have started for a claiming price of \$5,000 or less since July 31, 2000 — 1 1/16 miles,

**Express Stakes**, Purse \$25,000. For 3 and up which have started for a claiming price of \$7,500 or less since July 31, 2000 — 6 furlongs.

**Glass Slipper Stakes**, Purse \$30,000. For fillies and mares, 3 and up, which have started for a claiming price of \$12,500 or less since July 31, 2000 — 6 1/2 furlongs.

**Express Stakes**, Purse, \$40,000. For 3 and up which have started for a claiming price of \$16,000 or less since July 31, 2000 — 6 1/2 furlongs.

**Emerald Stakes**, for 3 and up which have started for a claiming price of \$20,000 or less since July 31, 2000 — 1 1/16 miles (turf).

**Jewel Stakes**, for 3 and up which have started for a claiming price of \$25,000 or less since July 31, 2000 — 1 1/8 miles.

In addition to the above purses: Philadelphia Park will pay the nomination fee of the winning horse to Canterbury Park which is \$500, if in the event the horse has already been nominated, we would reimburse the owner the nomination fee.

Philadelphia Park will pay, up to \$2,500, the shipping costs to get the winner to Canterbury Park. If the winner declines the offer, the offer would trickle down the order of finish.

There will be trainer awards for the first three finishers in each race. First will receive \$1,000, second \$500 and third \$250.

Philadelphia Park will host a buffet lunch for all the participants.

Philadelphia Park will market the events and supply trophies to each of the winning owners.

<b>Claiming Crown Purses:</b>	<b>\$220,000</b>
<b>Nomination Fees:</b>	<b>\$3,000</b>
<b>Shipping Bonuses:</b>	<b>\$15,000</b>
<b>Trainer Bonuses:</b>	<b>\$10,500</b>
<b>Bensalem Stake:</b>	<b>\$50,000</b>
<b>Remaining 3 Races:</b>	<b>\$35,000</b>
<b>Total Money for Day:</b>	<b>\$333,500</b>

#### Eligibility Requirements

**General Eligibility:** To be eligible to compete in any Pennsylvania Claiming Crown Preview Day (PCCP) event, a horse must have started for a claiming price since July 31, 2000, in races restricted to Thoroughbreds and conducted at a recognized North American pari-mutuel racetrack. Only races conducted at recognized North American pari-mutuel racetracks and restricted to Thoroughbreds are considered for eligibility requirements, weight allowances and penalties, and Field selection points.

To be eligible to compete in any PCCP event, the horse must have a nomination on file with the Philadelphia Park racing office, at or before the close of nominations, at 12:00 midnight (EDT) on May 15, 2001.

#### Eligibility for a Designated Race

In addition to the general eligibility requirements, to be eligible to compete in a specific designated PCCP event a horse must have started at the claiming level associated with that PCCP event, or at a lower claiming level, since July 31, 2000.

#### Nominations

Free nominations close on May 15, 2001.

#### Supplemental Nominations

Supplementary nominations close at noon Monday, June 4, 2001 at a cost of 5% of the event purse (includes the entry fee).

#### Field Selection

A maximum of 14 starters will be allowed in each of the PCCP events held at Philadelphia Park. A point system for preference will be used in the event that more than 14 horses have been entered in any one race.

Field selection is based on a point system reflecting performance from August 1, 2000 through June 5, 2001, inclusive, in accord with the category (i.e., eligible claiming price) of the designated PCCP race.

Points are awarded to a horse for every placing from August 1, 2000 through May 31, 2001, inclusive, as follows:

- **Graded stakes** - 1<sup>st</sup> Place 12 points, 2<sup>nd</sup> place 8 points and 3<sup>rd</sup> place 6 points
- **Allowance races, ungraded stakes, or in claiming/starter races with a price equal to or greater than the PCCP race nominated** - 1<sup>st</sup> Place 8 points, 2<sup>nd</sup> place 4 points and 3<sup>rd</sup> place 2 points
- **In claiming/starter races with a price below that of the PCCP race nominated** - 1<sup>st</sup> Place 6 points, 2<sup>nd</sup> place 3 points and 3<sup>rd</sup> place 1 points

In addition to the above points, all points earned by a horse in races that were run in Pennsylvania (Philadelphia Park or Penn National) will be doubled. Any horse that was unplaced in any Pennsylvania race will receive 1 point.

#### Tie Breakers

Preference will be given to horses with the highest total points. In the event of a tie between 2 or more horses, the following preferences will be given:

1. Most points earned in Pennsylvania.
2. High weights on the scale
3. Total points in the 1<sup>st</sup> 2 categories
4. Highest win percentage in the 1<sup>st</sup> 2 categories
5. Lottery pills will be drawn by the Stewards.

#### Rankings

The Philadelphia Park racing office will compile, post and keep current, the list of ranking points for the nominated horses.

#### Entry

Entries for PCCP Day will be taken on Tuesday, June 5, 2001. At the time of the post position draw, a maximum of 14 horses will be drawn into the body for each race with 4 also-eligibles, based on rankings points established. No PCCP race will be split.

#### Entry Fees

An entry fee of \$100 is due at the time of entries, Tuesday, June 5, 2001.

#### Starting Fees

None.

#### Exclusions

Any horse entered or supplemented that fails to draw into any event by reason of preference at scratch time, Thursday, June 7, 2001, will have all entry and/or supplemental fees refunded.



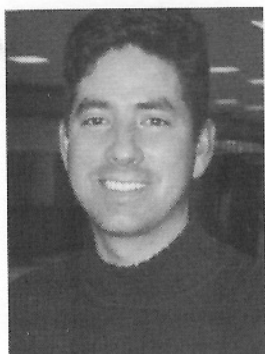
# SOUND OFF

*(This column will appear periodically and explore opinions of horsemen and horsewomen on questions of interest and importance to the racing industry).*

Garden State Park, which opened for the first time on Saturday, July 18, 1942, is now conducting its final thoroughbred meeting (last day: May 3) and will be converted into a \$500 million development of luxury condominiums, shops and a million-square foot office complex. Construction could begin this year and is expected to take 10 years.

The question for this month:

How will the closing of Garden State Park affect you?



**J o s e** Gallegos, who stables at Philadelphia Park year round: "Basically, you hate to see any race track close, but you have to com-

pensate. I do race at Garden State every year and I have Jersey bred, but I'll just take them to Monmouth. No, I don't worry about running out of places to race and I'm not sorry I chose to get into horse racing. The way I saw it, I had options. It was either this or become a brain surgeon (smiling). I didn't feel like going to school."

Dee Curry, who has 22 horses in her stable and has been training publicly for 3 1/2 years: "I predicted ten years ago Garden State Park would close. I've been telling my



the stables from New Jersey coming over here. I hope Philadelphia Park will be loyal to the stables that were loyal to them."



a clothes model before getting into racing: "Garden State Park closing breaks up our circuit. In New Jersey, we went from Garden to Monmouth to the Meadowlands. Being able to come to Philadelphia Park makes the situation better. We were lucky to get stall space here. I don't know if we can count on that every year."

**B o b** Camac, who has 60 horses in training: "I do have 12 Jersey bred so it will make a difference. I always liked Garden State. I'd been

in Barn 1 there for several years when it burned down (It was rebuilt and reopened in 1985). So yeah, there was kind of a sentimental attachment."



owners Pennsylvania is the place to be. The only way the closing will affect me is that it could be harder to get stall space with all

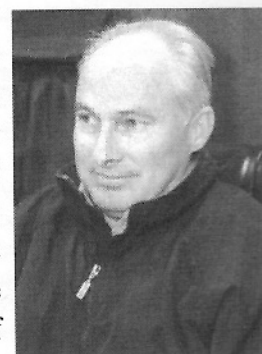
**D a r i o** Vasquez, has been training 28 years and has 10 horses stabled at Philadelphia Park. He had a career when he was a young man as



**C a r o l** LeVine, who has five horses stabled at Philadelphia Park, but expects to have 10 or 11 by summer when three 2

year olds come in from Florida and two 3 year olds return to racing who were stakes placed last year: "The closing shouldn't affect us too much. We ran a couple over there every year and I did like the turf course. You do hate to see any track close and Garden State was convenient, a nice, stress-free shipping situation."

**J i m m y** Walford, who was injured so many times as a jockey, he claims there's an orthopedic surgeon at the University of Pennsylvania



Hospital that he kept so busy, he was his only patient. For the last eight years, he has been operating a tack shop at Garden State Park that he's turned into a world-wide business: "I ship to 22 countries, jockey equipment mainly. I do business as Whips International. We manufacture and sell custom whips and we also manufacture goggles and do custom embroidery at the Garden State shop so I do have to find another site. We'll lose about 30 percent of our business by Garden State closing but we have an internet site under construction, Jockeystore.com that will more than make up for it."



# BACKSIDE VIEW



The world population was joyfully increased by one when **Jill Weinberg**, daughter of horse owner/trucking company executive **Marvin Factor**, pictured here with mother and brand new granddaughter, gave birth March 19 to an 8 pound, 10 ounce, 20 1/2 inch baby girl, **Lindsay Blair Weinberg**. The father is **David Weinberg**.

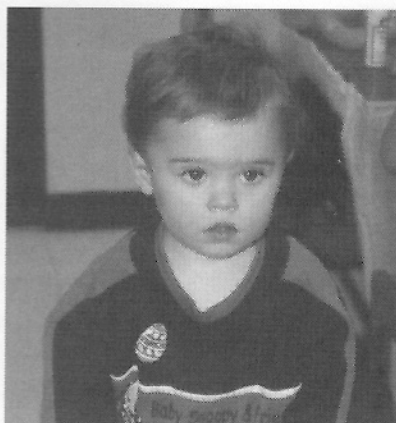
Stable employees **Terry Hutcheson** and **Kenneth Rupp** acted quickly and heroically when they heard a crash near the racetrack early on the morning of March 12 as they worked in the barns. They grabbed a ladder, scaled the eight-foot fence that cordons off Philadelphia Park and rushed to a truck that had plummeted into the creek and overturned after the driver fell asleep at the wheel while traveling the Pennsylvania Turnpike. **Hutcheson** and **Rupp** climbed to the cab and safely removed the driver, who was conscious but dazed. The driver didn't suffer serious injury.

**Brian Swentkowski**, who is now 15 months old and able to party with the best of kids, proved to be a lucky charm to his parents, **Robert** and **Kim Swentkowski**, when he was born 9:45 the morning of Jan. 2, 2000. Assistant trainer dad then rushed to

the racetrack, where he saddled two winners that day for a barn that had only six horses at the time.

"We haven't won two in a single day since then," said dad **Robert**, who was with mom and son at the annual Easter Egg Hunt on the backstretch March 31.

"That doesn't mean I'm going to have a baby any time we want to win two," said mom **Kim**.



**David Baker**, the rider who was severely injured in a training accident last October, has been moved to a rehabilitation hospital. **Baker's** family has sent a heartfelt thank-you note to the horsemen and horsewomen who contributed to a fund for the jockey, who had no medical insurance. For those wishing to say hello or send best wishes, this is **David's** new address:

Southside Hospital  
Room 2404  
301 East Main Street  
Bayshore, NY 11706

**Scott Lake**, a trainer who calls Philadelphia Park his home base, reached a pinnacle in his career last year when he was a finalist for the Eclipse Award in balloting

for the nation's top conditioner. If he needed to confirm his status as one of the bright young stars of thoroughbred racing, he did it with a flashy feat on Saturday, April 7, when he won a total of seven races at three different tracks in three different states within a tight radius of 150 miles.

He captured a pair of races at Philadelphia Park, with **McCarty Racing's** Dancing Fleur in the 6th and **Richard A. Englander's** Spring Crop in the 10th. He won three races at Pimlico, with **Joe Beseker's** Eric's Toy in the 4th, **Englander's** Nighttime Dances in the 8th and **Robert L. Cole Jr.'s** Sonofaqueen in the 9th. At Delaware, he scored with **Home Team Stables' Summer Squeal** in the 3rd and **Cole's Home Run Derby** in the 4th.

To show the regard with which he's held by racing fans, four of his seven winners were sent off at odds on. To show the regard with which he's held by this newsletter, the edition was on the way to the printer when it was called back so **Lake's** accomplishment could be included. We were unable to determine at press time if **Lake's** seven wins at three tracks in a single day was a record, but if it wasn't, it should have been.



## CHAPLAIN'S CORNER

*continued from pg. 5*

Thirty two attended the meeting and in addition to hearing information on the dangers of smoking (Tobacco kills more Americans each year than alcohol, cocaine, crack, heroin, homicide, suicide, fires, car accidents and AIDS combined.), were each presented with several boxes and cans of nutritious food.

We thank you, Lina, for your concern for the health of our Latino community here at the track. The Latino Health Project is funded by the Pennsylvania Department of Health.

Besides Lina Castro, we are indebted to such people as Bob Bliss, who gives many hours each week to distribute clothing, assists with serving refreshments each Wednesday evening following the worship service as well

as performing numerous other tasks day after day.

Also, we thank Churchville Baptist Church, First Baptist Church of Levittown, Hilda Garcia and the Chaplains from St. Mary's Hospital for providing absolutely delicious meals following several of the Wednesday evening worship services. These kind folks uplift all of us who are involved with the backstretch.

# BULLETIN BOARD

## Certificate

FREE NOKIA DIGITAL PHONE  
ON ANY VOICE STREAM PLAN • CALLING PLANS START AS LOW AS \$19.99

### *All Plans Include:*

- FREE VOICE MAIL
- FREE CALLER ID
- FREE CALL WAITING
- EXTENDED CALLING AREA
- FREE CIGARETTE ADAPTER
- FREE LEATHER CASE
- FREE HANDS FREE ADAPTER

CALL RALPH BRUNO TODAY!

*American Wireless Communications* • 215-604-0670

**VoiceStream**  
Authorized Dealer

*Providing Tax & Accounting  
Services for The Racing Industry  
for over Twenty Years*

## COLUCCI & SLATTERY, P.C.

Certified Public Accountants  
Accounting • Auditing  
Personal Financial Planning  
Tax Planning & Preparation

Offices in Pennsylvania & New Jersey

### PENNSYLVANIA OFFICE:

955 Horsham Road  
Horsham, PA 19044  
Phone: 215-672-0400  
Fax: 215-672-7584

### NEW JERSEY OFFICE:

739 S. White Horse Pike, Suite #4  
Audubon, NJ 08106  
Phone: 856-310-1400  
Fax: 856-310-9933

**For the best in Payroll & Payroll Taxes Call:**

## **PAYCHEX®**

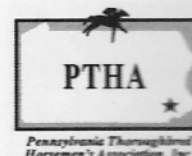
**HEIDI PFEIFFER**

Valley Forge Corporate Center  
1100 Adams Avenue  
Norristown, PA 19403  
www.paychex.com

Main (610) 650-8100  
Direct (610) 676-7129  
Fax (610) 676-8358

**WATCH ~  
LET'S GO RACING**  
ON 

- SATURDAY MORNINGS AT 10:00 AM ON CN8
- HOSTED BY THE VOICE OF PHILADELPHIA PARK  
~ KEITH JONES AND THE DAILY NEWS'  
DICK JERARDI
- MEET LOCAL RACING PERSONALITIES AND  
EQUINE STARS
- WEEKLY NATIONAL REVIEW
- DISCUSS TOPICS OF LOCAL  
INTERESTS



## RECORD SETTING YEAR

*continued from pg. 1*

added to purses. It was stipulated by Harrisburg that the remainder had to be spent by racetrack management for the betterment of horse racing, including physical improvements to the overall facility.

Sal DeBunda, 2nd Vice President of the PTHA, would later in the meeting tell the membership it shouldn't take for granted that the 50 percent share for the horsemen of the total returned by the State was a slam dunk. He credited Ballezzi's leadership and persistence in pressing the issue for winning the day.

Ballezzi did caution that the horsemen would have to fight the same battle with the Legislature all over again this year to have money contributed to the budget by taxes on handle returned to the racetracks. But he said on an upbeat note, "We expect to have the same \$10 million allocated to us again."

\* \* \*

Ballezzi expressed strong feelings over what might seem like a small money amount since most of the evening was taken up with discussing hundreds of thousands and millions of dollars.

"We spent \$110,000 last year," he

said, "to hire someone to come in to clean out the manure pits."

He said horsemen had done "a woefully poor" job in maintaining cleanliness of the pits and that the money spent for trash cleanup would have been better used on such things as prescription drugs and eyeglasses and the general health of the membership.

"It's on the conscience of every one of us," he said. "We're about benevolence for the membership, not wasting money cleaning up the pits."

He pointed out individuals would be cited for pits that were used as dumpsters and trash cans and that if they still refused to clean out the pits, would be subject to a maximum fine of \$200.

\* \* \*

The Executive Director also detailed improvements scheduled for the backside this year that include approximately \$600,000 to be spent on repaving that will repair potholes and improve drainage, reroofing the balance of barns that need the work done and beginning the job of painting the dormitories and eventually the barns.

\* \* \*

Ballezzi fired up the PTHA members in preparation for the Claiming Crown Preview II (complete story starts at the bottom of Page 1) that will take place June 2 by reminding them of what happened last year after the



**MEMBERS MIX SOCIALLY** before the meeting.

initial running of the local event and a Philadelphia contingent visited Canterbury Park in Minnesota for the annual Claiming Crown that has drawn so much national attention.

"We kicked a—," he said.

Ballezzi gave a lion's share of the credit for the success of the Preview at Philadelphia Park to Board Member Steve Appel, who chairs the event.

\* \* \*

Sal DeBunda reminded the members that slot machines at the State's racetracks were still a major item on the agenda and that a push would be made later this year to convince Gov. Ridge that, with a limited time remaining on his term in office, he should reconsider his opposition.

\* \* \*

A guest speaker at the membership meeting was Kelly Young, manager of the Lost & Found Horse Rescue located in York, PA. She asked that horsemen consider turning horses over to her organization that have ended their racing careers, even if they've broken down. She pointed out the tax benefits of giving the horses "a second chance."

Also in attendance was Laurie McDowell, new board member of the Penn National HBPA, who received a warm round of applause when she was introduced.



**BOARD MEMBERS GATHER** at general membership meeting.



# PHILADELPHIA PARK

## 2001 Racing Schedule – Post Time: 12:25 PM

JANUARY							FEBRUARY							MARCH						
Su	M	T	W	Th	F	Sa	Su	M	T	W	Th	F	Sa	Su	M	T	W	Th	F	Sa
	1	2	3		5	6						2	3						2	3
7	8	9			12	13	4	5	6			9	10	4	5	6			9	10
14	15	16	17		19	20	11	12	13			16	17	11	12	13			16	17
21	22	23			26	27	18	19	20	21		23	24	18	19	20			23	24
28	29	30					25	26	27					25	26	27			30	31
APRIL							MAY							JUNE						
Su	M	T	W	Th	F	Sa	Su	M	T	W	Th	F	Sa	Su	M	T	W	Th	F	Sa
1	2	3				7			1				5							2
8	9	10					6	7	8				12	3	4	5				9
							11	12	13				19	10	11	12				16
						28	20	21	22		26		25	17	18	19				23
29	30						27	28	29	30				24	25	26				30
JULY							AUGUST							SEPTEMBER						
Su	M	T	W	Th	F	Sa	Su	M	T	W	Th	F	Sa	Su	M	T	W	Th	F	Sa
1	2	3	4			7							4							1
8	9	10				14	5	6	7				11	2	3	4	5			8
15	16	17				21	12	13	14				18	9	10	11				15
22	23	24				28	19	20	21				25	16	17	18				22
29	30	31					26	27	28					23	24	25				29
														30						
OCTOBER							NOVEMBER							DECEMBER						
Su	M	T	W	Th	F	Sa	Su	M	T	W	Th	F	Sa	Su	M	T	W	Th	F	Sa
	1	2				6							3							1
7	8	9	10				4	5	6	7			10	2	3	4			7	8
							11	12	13			16	17	9	10	11			14	15
						27	18	19	20			23	24	16	17	18			21	22
28	29	30					25	26	27			30		23	24				28	29
														30	31					

**PRESIDENT**

LAWRENCE R. RIVIELLO

**1ST VICE PRESIDENT**

SALVATORE M. DEBUNDA, ESQ.

**2ND VICE PRESIDENT**

DONALD S. REEDER

**DIRECTOR/OWNERS**

STEVEN A. APPEL, DDS

MICHAEL P. BALLEZZI, ESQ.

SALVATORE M. DEBUNDA, ESQ.

WILLIAM J. HARTWELL

JOSEPH J. SENA, JR., ESQ.



*Pennsylvania Thoroughbred  
Horsemen's Association, Inc.*

**EXECUTIVE DIRECTOR**

MICHAEL P. BALLEZZI, ESQ.

**DIRECTOR/TRAINERS**

RALPH J. DELANEY, JR.

DONALD S. REEDER

RALPH R. RIVIEZZO

STEVE E. ROWAN

ROBERT J. SEEGER

**SECRETARY**

CONNIE YOUMANS

**ACCOUNTANT**

COLUCCI & SLATTERY, C.P.A., P.C.

**ATTORNEYS**

PELINO & LENTZ, P.C.

**EDITOR/WRITING**

LARRY MCMULLEN

**DESIGN/LAYOUT**

COLEEN MCMULLEN

***Pennsylvania Thoroughbred  
Horsemen's Association, Inc.***

P.O. BOX 300  
BENSALEM, PA 19020

Address Service Requested

Presorted  
FIRST-CLASS MAIL  
U.S. POSTAGE PAID  
PERMIT NO. 99  
BENSALEM, PA  
19020

